



LME COLLECTIONS

102 TRANSITION PRESETS FOR APPLE'S MOTION COLLECTION TUTORIAL

Our transition presets are not available with Apple's Motion application.

102 Innovative presets easily applied to footage layers. The collection includes flashes, light bursts, color and time distortions, zoom blurs, halftone grunge, implosions, color thresholds, fun house mirror extremes, circular zooms, pixel distortions, broadcast mutations and dozens of others.

We crafted them using dozens of the available Motion effect plug-ins that come with the application.

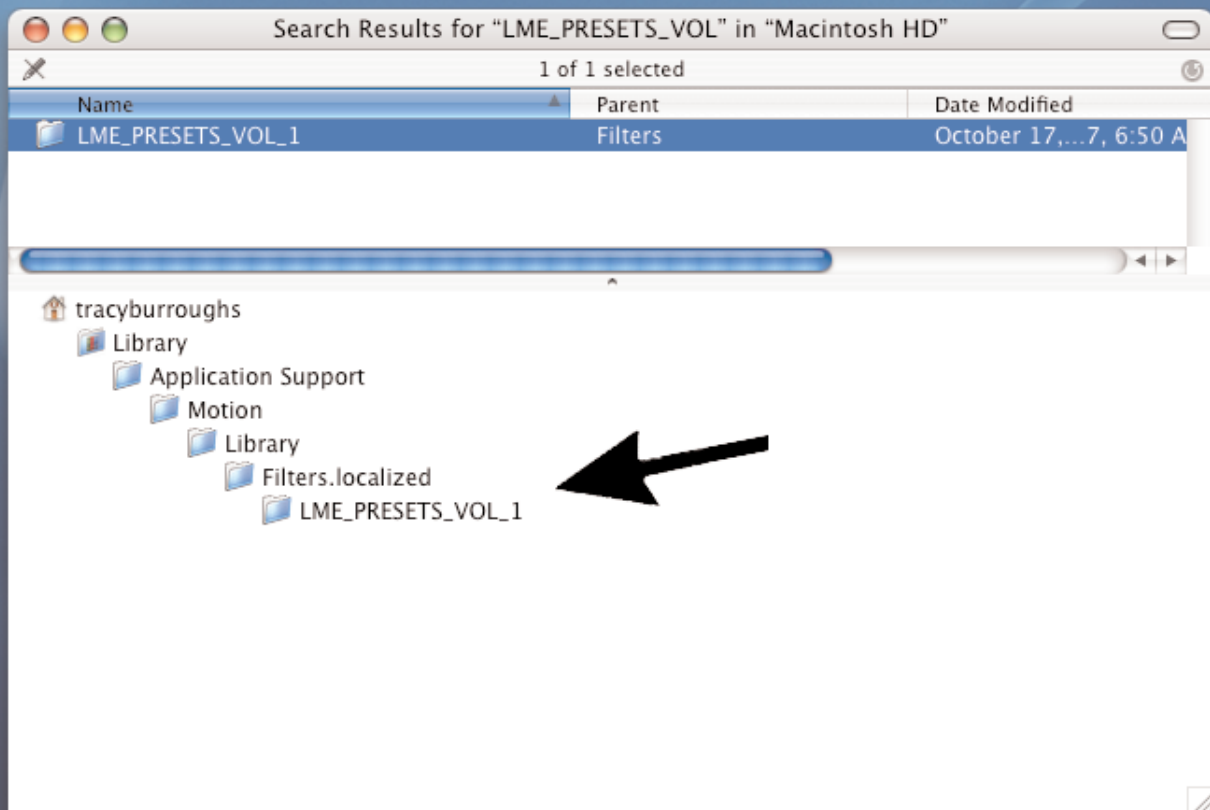
We did the experimenting so you wouldn't have to. Some look like the transitions you see on television, commercials and other broadcast design, plus dozens of dazzling original ones never seen before.

(Go to our gallery of animations to see what's included in the collection)

WHERE TO PUT THE PRESETS FOLDER

1

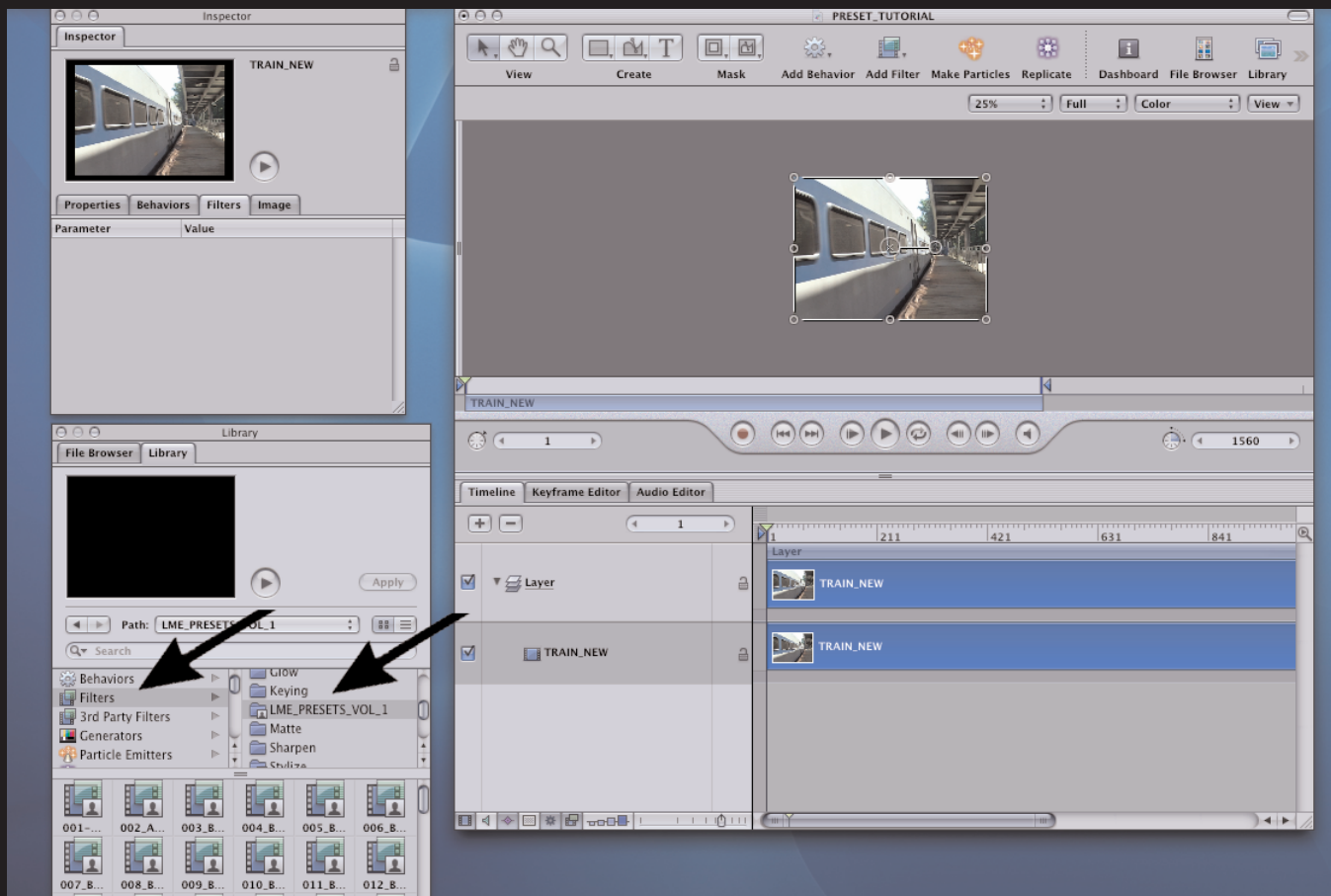
In the collection folder there is a **LMS_PRESETS_VOL_1** folder. Place that into the **Filters.localized** folder following the hierarchy below.



FINDING THE PRESETS FOLDER

2

Open up Motion. Select the **LIBRARY** tab, then click on **FILTERS**. On the right you will see the **LME_PRESETS_VOL_1** folder.



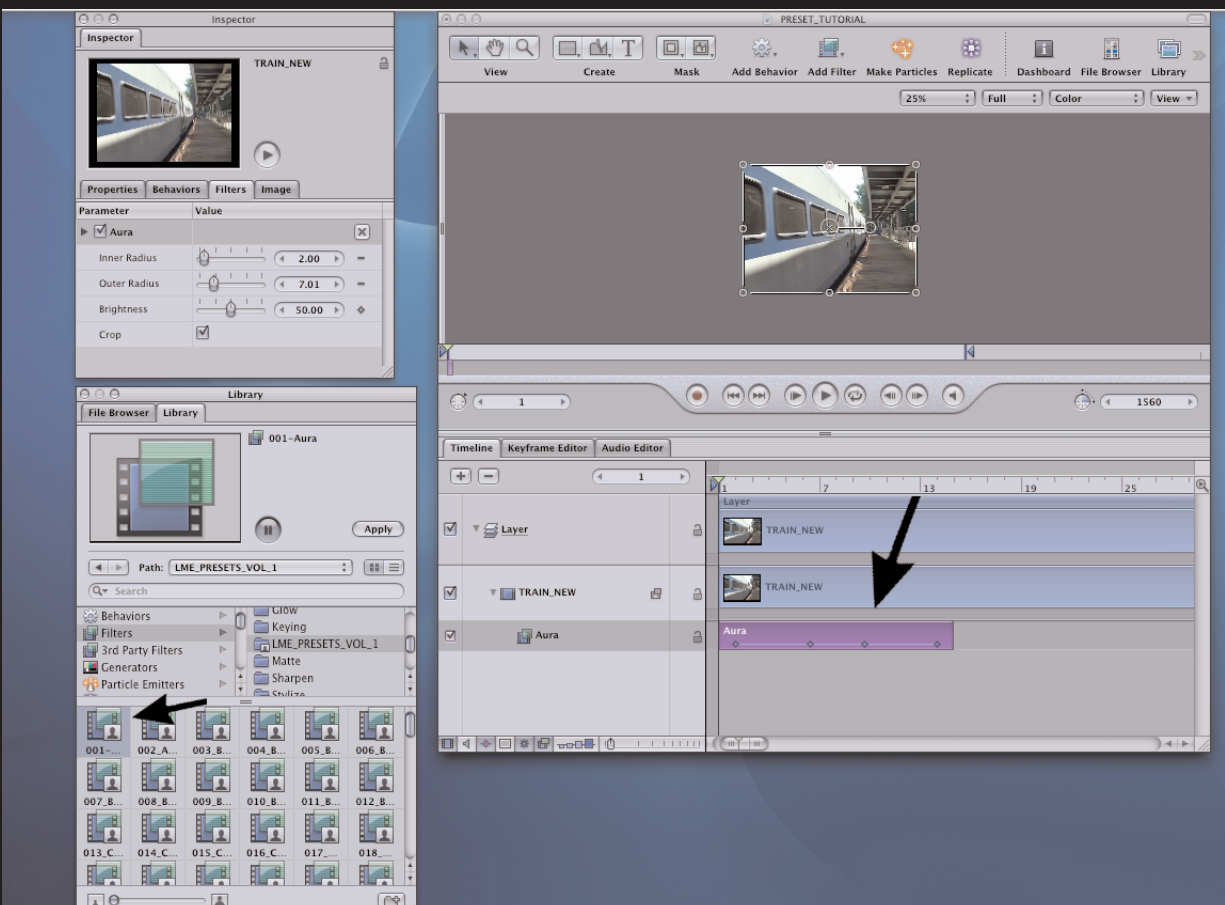
APPLY A PRESET

3

The numbers of the animations in this collection's gallery correspond with the preset numbers. Find a transition that you like and then select a preset with the same number in the LME PRESETS VOL 1 folder.

When you have footage in the timeline grab that preset with your cursor and place it on the footage in the time line. The preset bar will show up in the beginning of the timeline.

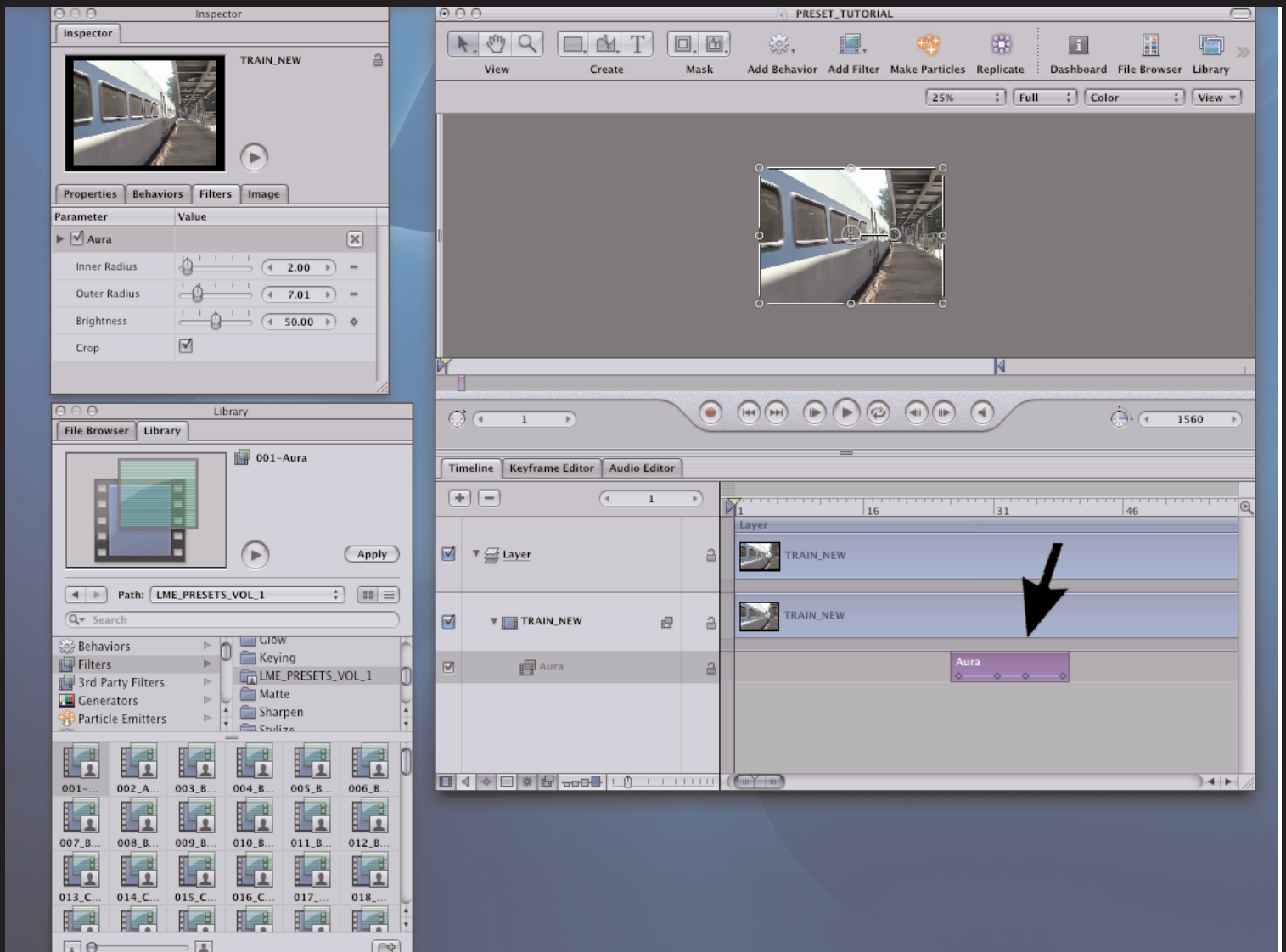
When you do this the preset's parameters dialog box will pop up.



APPLY A PRESET

3

Move the preset bar to where you want it in the time line by grabbing it with your cursor.



STRETCHING THE PRESET BAR IN THE TIMELINE

With your cursor grab the right hand edge of the preset bar in the timeline and pull to the desired length. The ratio of the space between the keyframes will adjust accordingly.

