



LME COLLECTIONS

CONVERTING LME TEMPLATES TO HD TUTORIAL

Most of all the over 1000 templates in our collections can be easily resized to your HD specifications.

First back-up your collection folder. Open up the master collection comp. Isolate the comp you want to use by using the REDUCE function under FILE in the AE menu. Replace out photos with the graphics you are using. Make sure you maintain the same size that we used which is 720 x 480.

Some of the templates in our collection may have many pre-comps, layers, null layers, etc. In these cases the best solution is to create a new comp the HD size that you need (1280 x 720, 1440 X 1080, 1920 x 1080, or whatever) and drop in the comp/template you want to resize, then go to scale in transform and scale up to your needs.

If you replace our art with art that is larger than 720 x480 you will need to make some additional adjustments.

If you are using one of our comps that during the animation a photo or movie fills more than a quarter of the screen (This depends on the HD resolution you are using), that art now in HD will render in a lower than appropriate resolution.

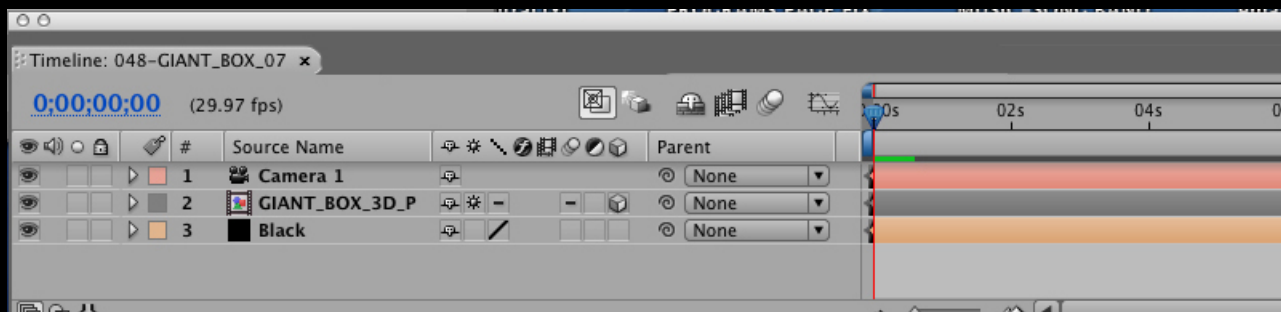
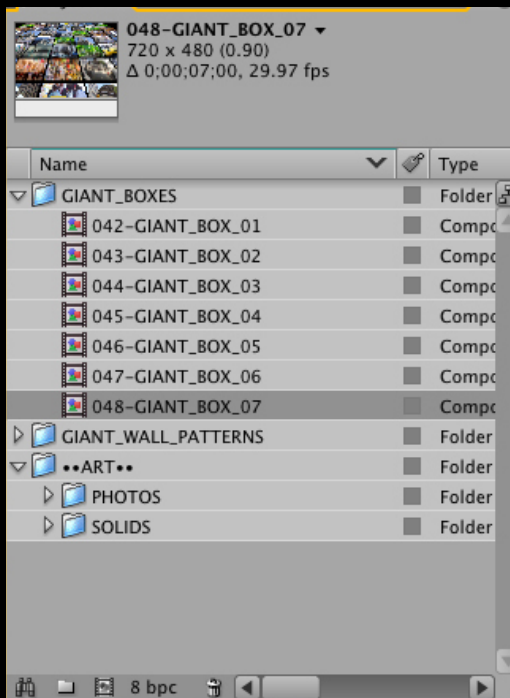
You can either adjust the comp to compensate for this which is the easiest approach or replace that art with a larger size which may involve additional adjustments.

In this tutorial we will show you a simple HD conversion.

HD CONVERSION

1

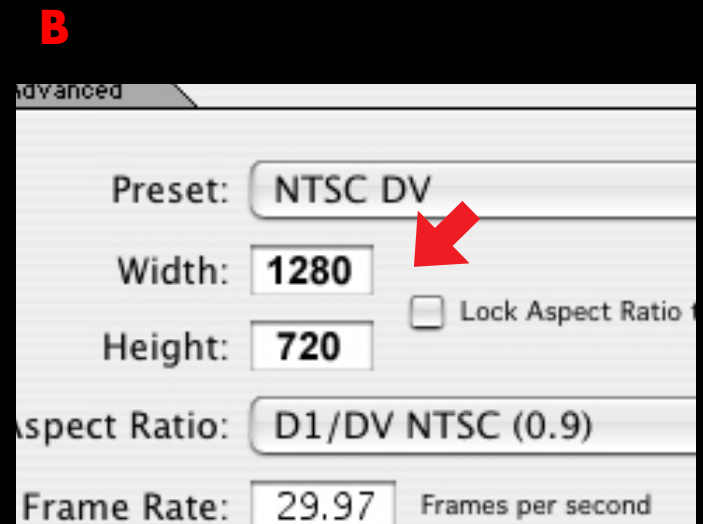
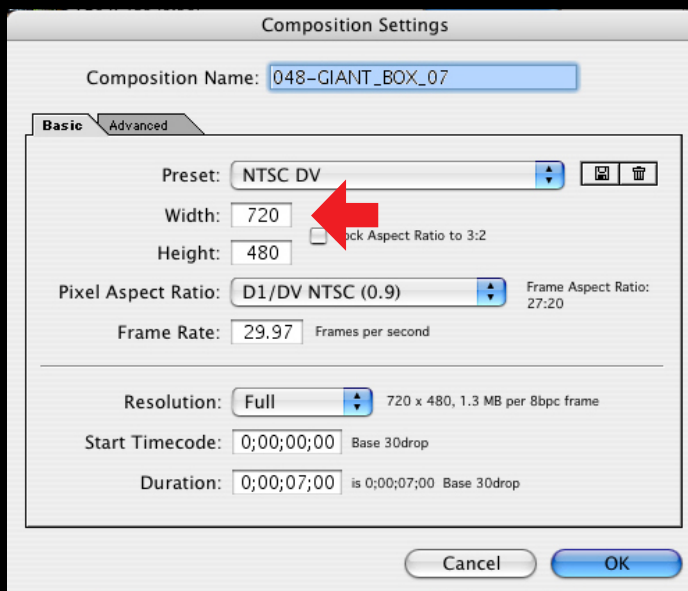
We will make an HD 1280 x 720 comp out of a SD (standard definition comp) 720 x 480 comp.
We are using comp 048 from our Amazing Photo & Video Walls collection to demonstrate this.



CHANGING COMP SETTINGS

2

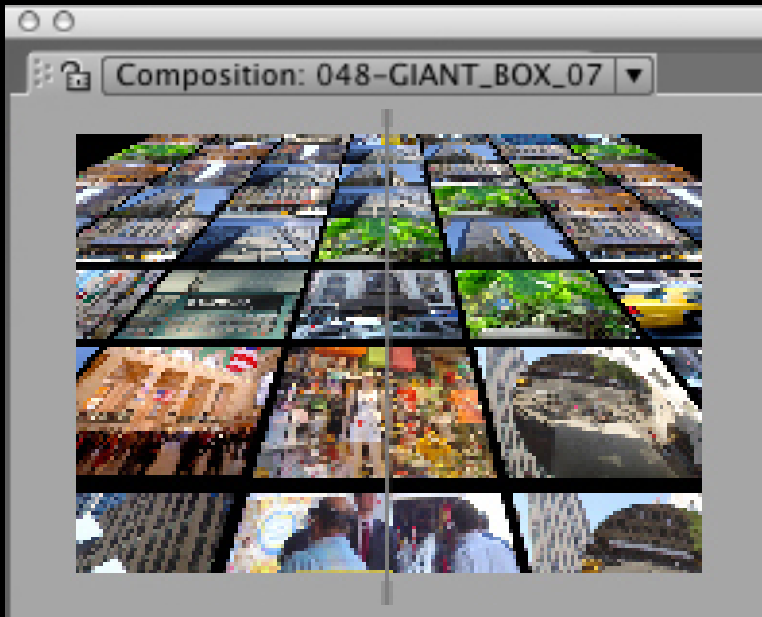
Open up the composition settings and change the dimensions from 720 x 480 to 1280 x 480 as shown in illustration B.



BEFORE AND AFTER CHANGING THE SETTINGS

3

Before size was increased.



The same comp after the size was increased.

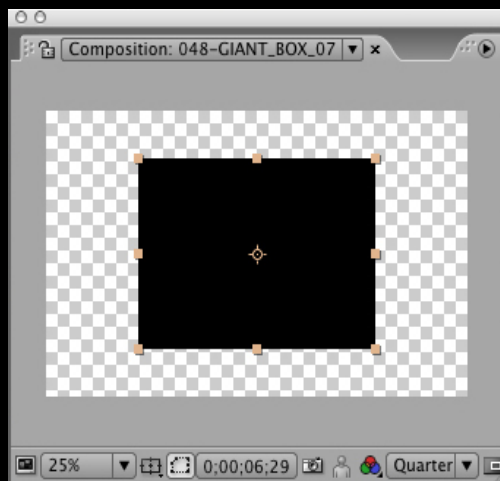
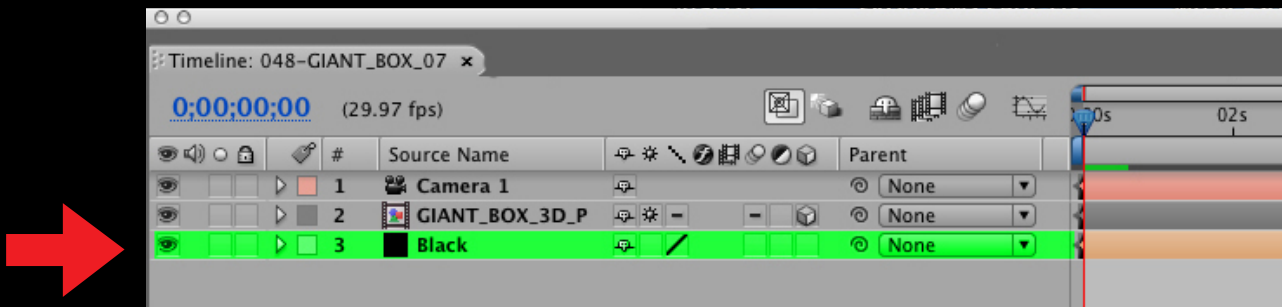


The background art size has not yet been resized.

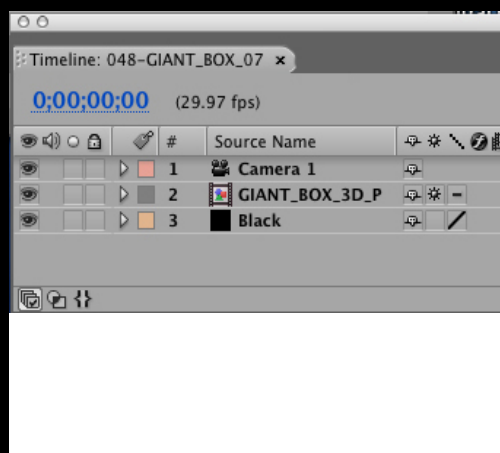
RESIZING OTHER ELEMENTS OF THE COMP

4

Select the solid layer in the timeline. Under **LAYER** in the AE menu go to **SOLID SETTINGS** and change the dimensions to 1280 x 720.



Before.



After

To make the new sized comp animation look just like the original you may need to adjust settings for Z depth for the Giant Box 3D precomp as well as other keyframe for both this layer and the Camera layer.