



# LME COLLECTIONS

## TREASURE CHEST OF AE TRANSITION PRESETS TUTORIAL

**After Effects 7.0 or higher for Mac or Win**

**We crafted transitions in the collection using dozens of the available AE effect plug-ins that come with the application. They were not created using expressions.**

**We did the experimenting so you wouldn't have to creating 120 innovative transitions not available in any other collection. Some look like the transitions you see on television, commercials and other broadcast design, plus dozens of dazzling original ones never seen before.**

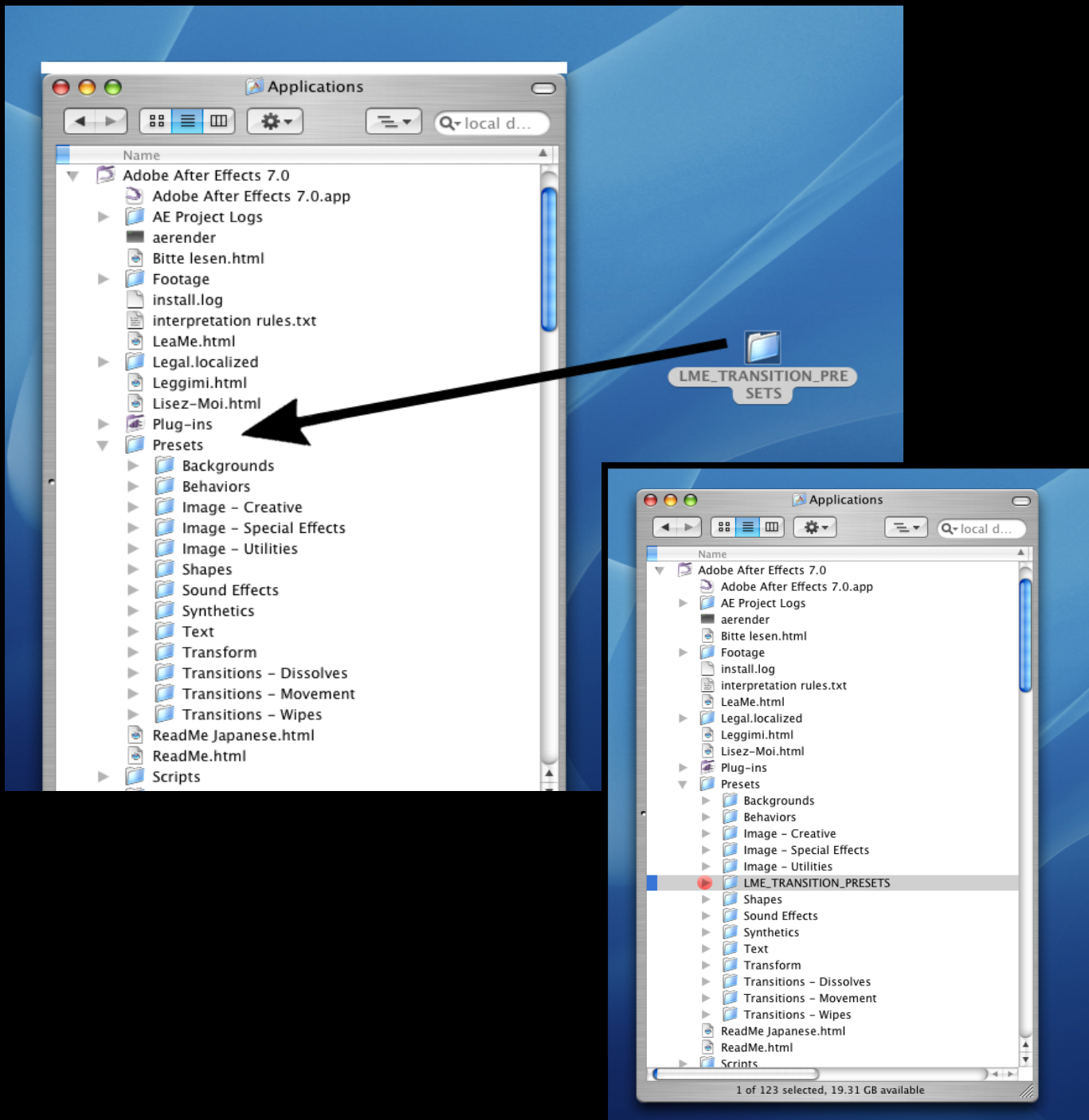
**To view an animated gallery for each of our collections go to [GALLERIES. www.little-men.com/GALLERIES\\_GENERIC.html](http://www.little-men.com/GALLERIES_GENERIC.html)**

**The numbering of the Quicktime animations correspond to the numbering of the comps in the master comp for each collection.))**

# WHERE TO PUT THE PRESETS FOLDER

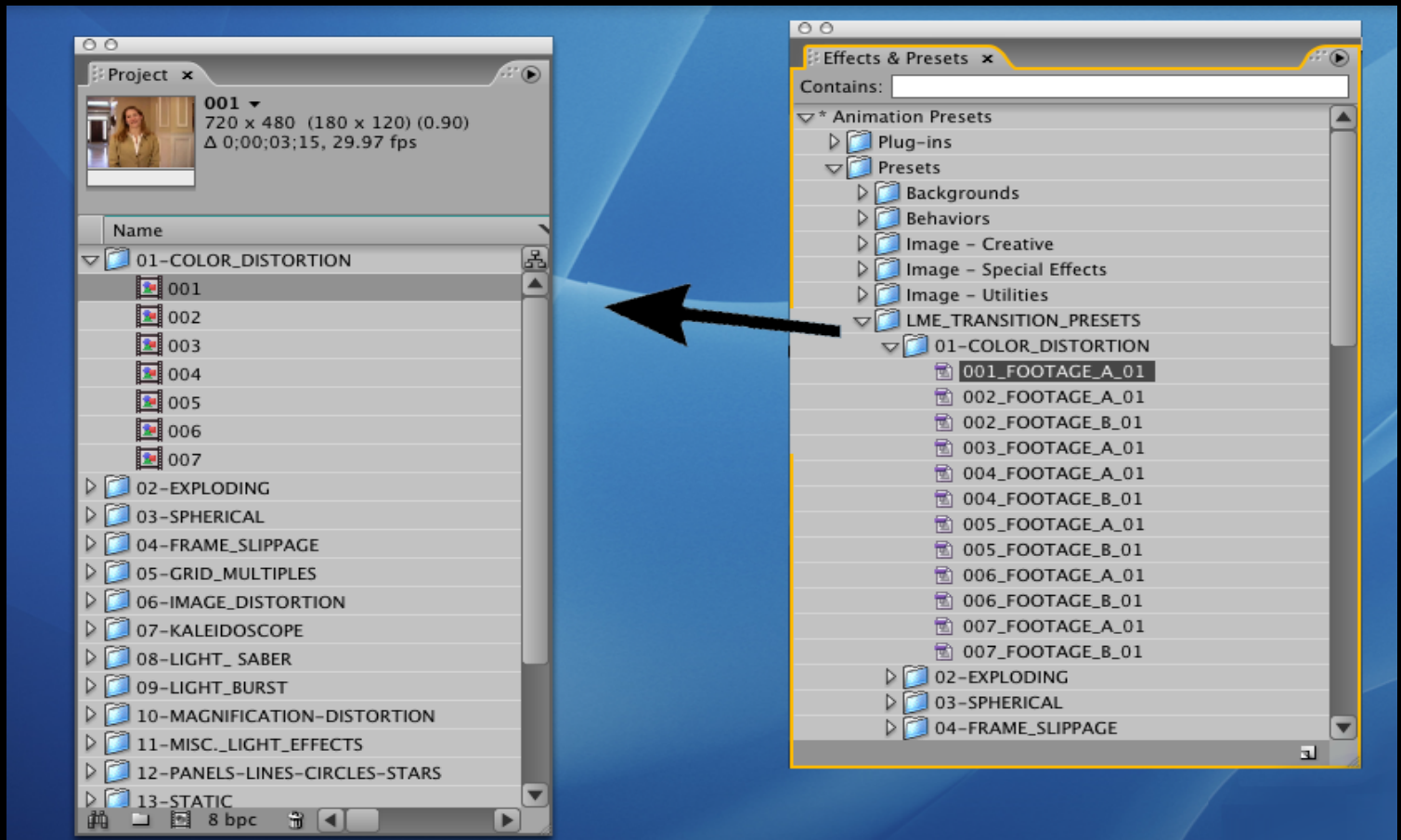
1

Place the LME TRANSITIONS PRESETS folder into the After Effects 7.0 application PRESETS folder.



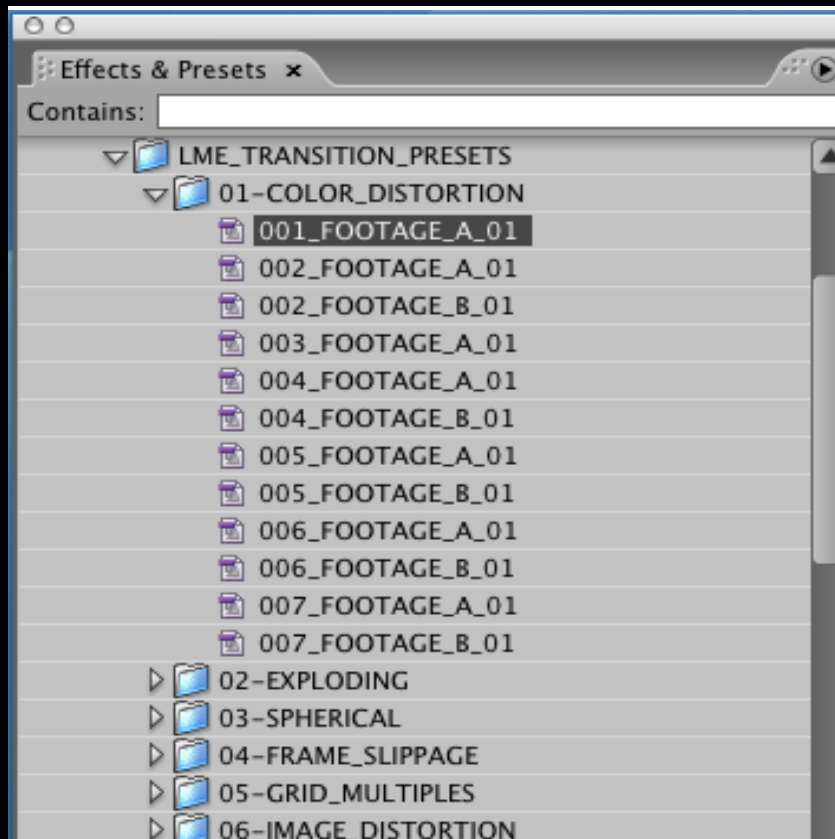
If AE 's Effects and Presets menu are already open when you have done step #1, then toggle REFRESH in the side options menu.

Notice that the folder hierarchy in the LME Transitions Presets folder mimics the hierarchy in the projects bin. (There are more presets than projects because some projects use 1 preset and some use 2)  
The projects are only a reference to show you how the presets could be used.



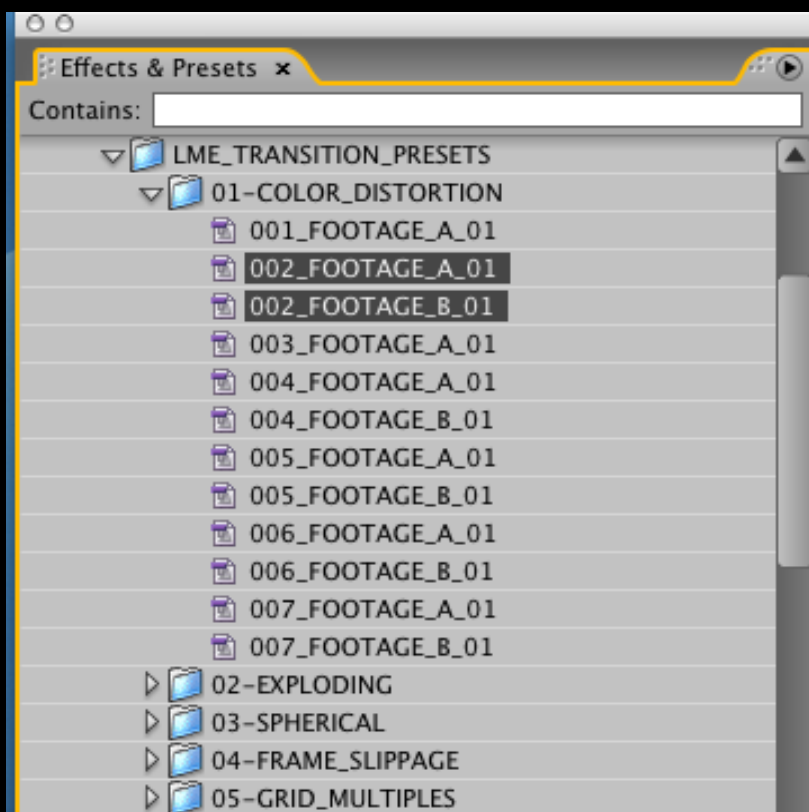
## CREATING TRANSITIONS USING SINGLE & DOUBLE PRESETS

# 3



In the collection folder there is a project called **TREASURE\_CHEST\_121\_AE\_TRANSITIONS.aep**. Open it. Inside are **120 comps**.

The comps are set up to show you how you might apply the preset. Each has **2 pieces of footage**. (Footage A and Footage B)

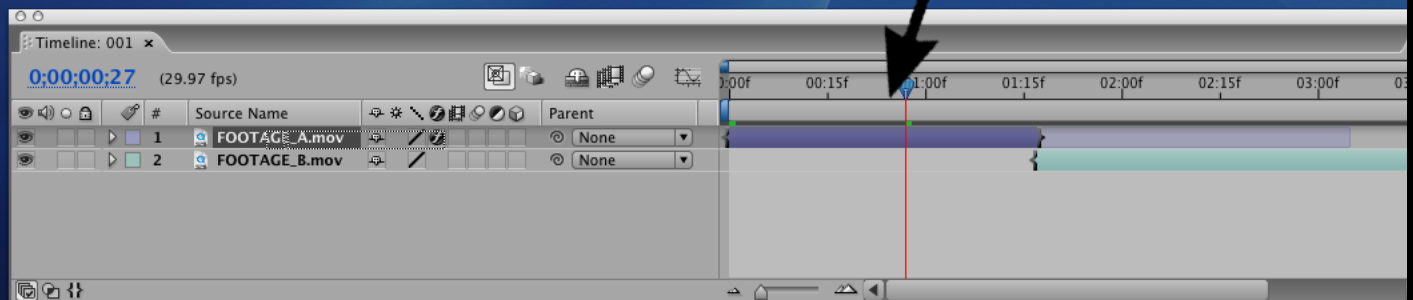
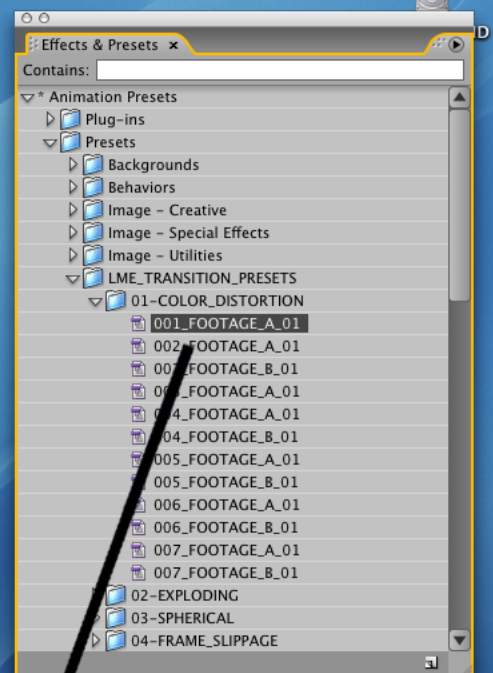
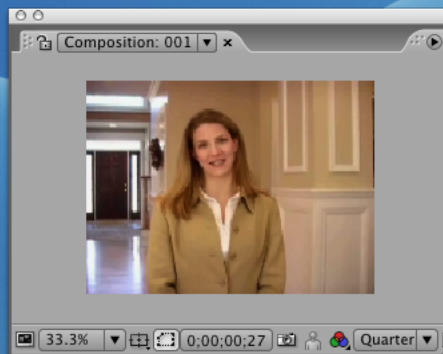
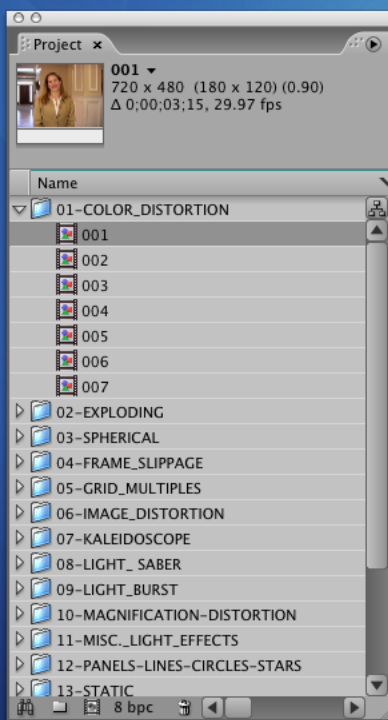


In some comps you'll see we have only applied one preset and applied it to Footage A and in some comps we have created 2 presets, one for Footage A and one for Footage B.

## APPLYING THE PRESETS TO FOOTAGE TO CREATE A TRANSITION

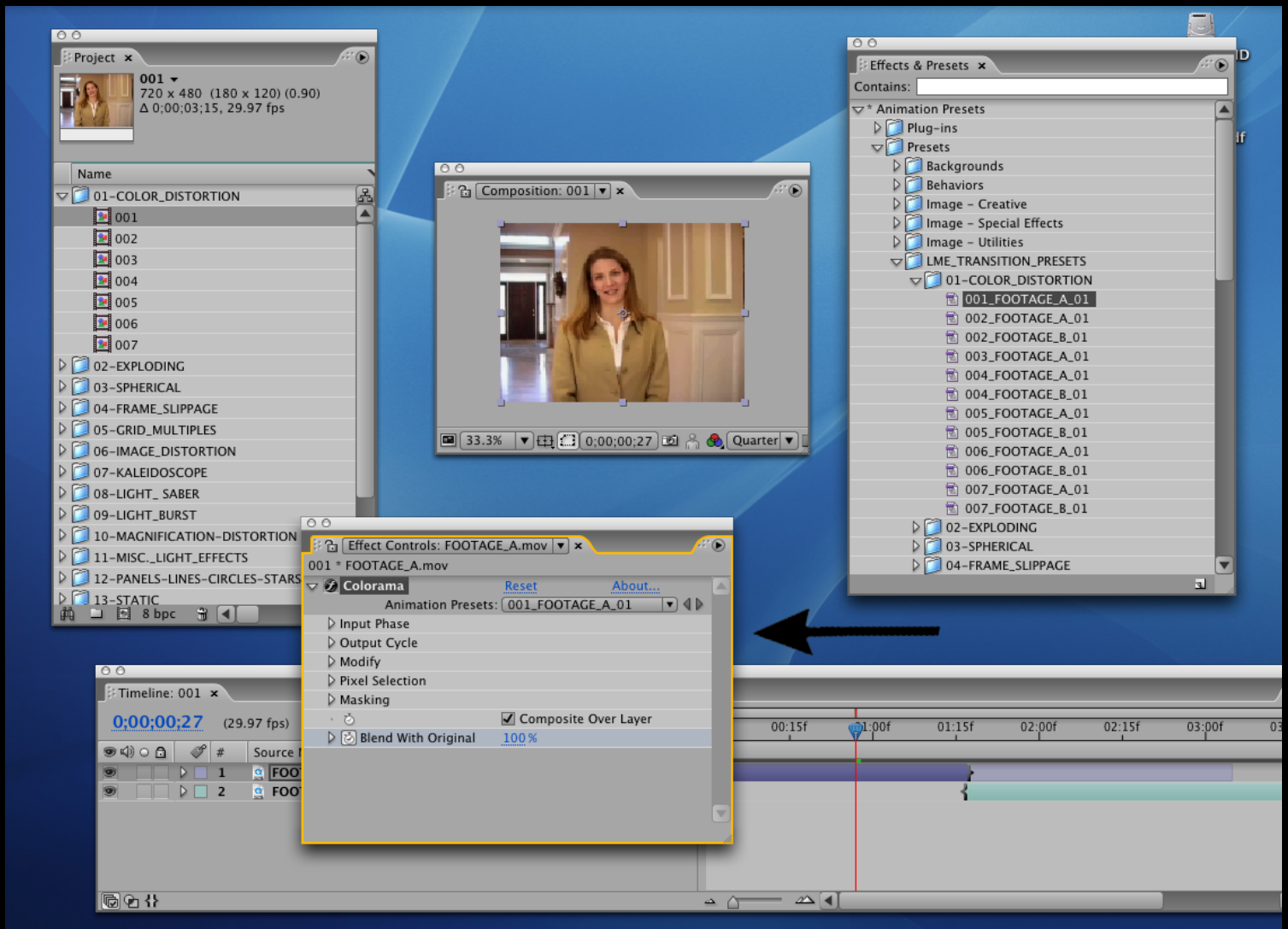
# 4

If there is no Footage B preset and only a Footage A preset then the preset is only applied to Footage A in the timeline. With your cursor grab the preset and drop it onto Footage A.



## EFFECTS CONTROL BOX.

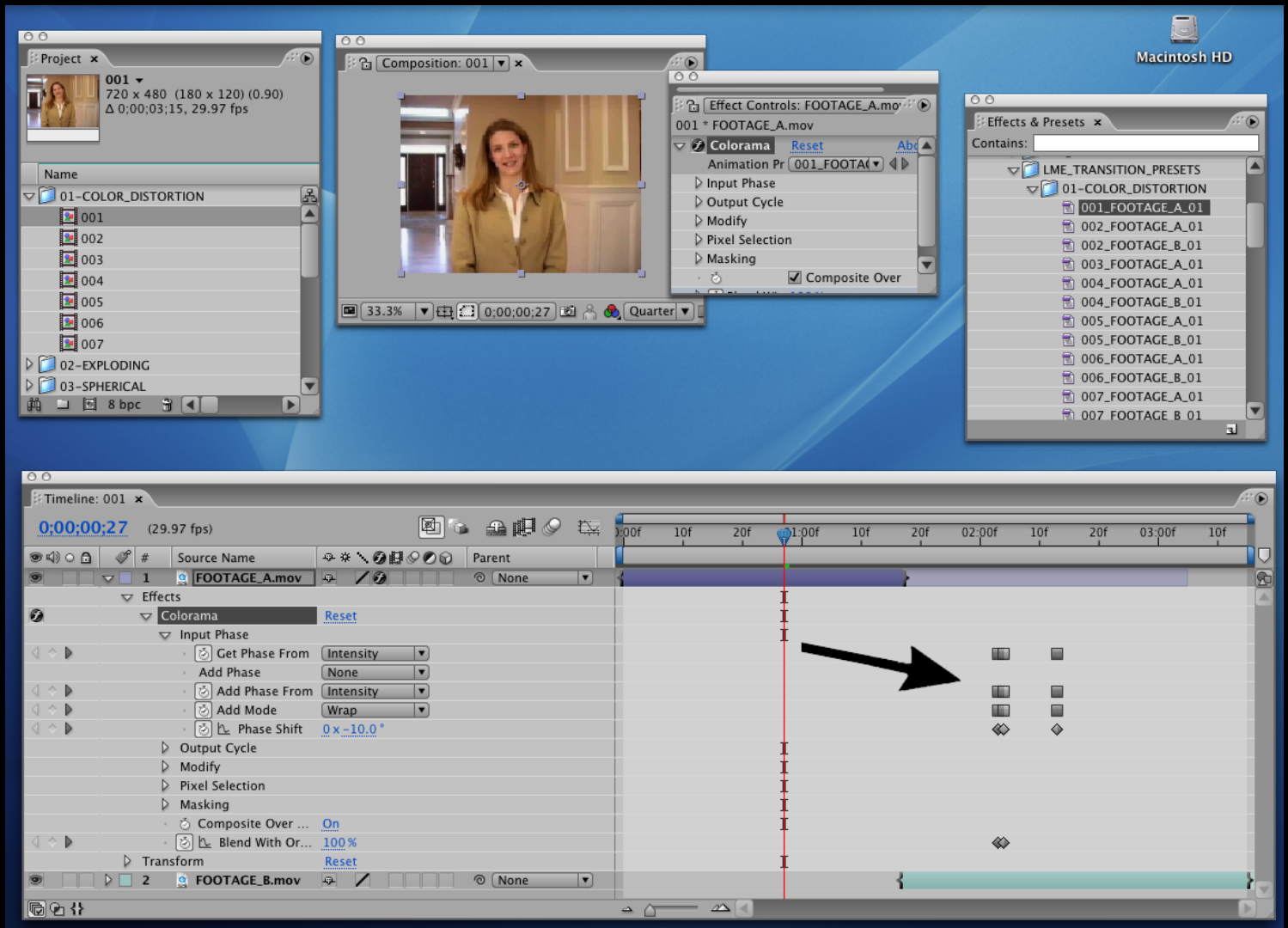
Once you have dropped a preset on to a footage layer the Effects Control box pops up.



# REVEALING KEYFRAMES

6

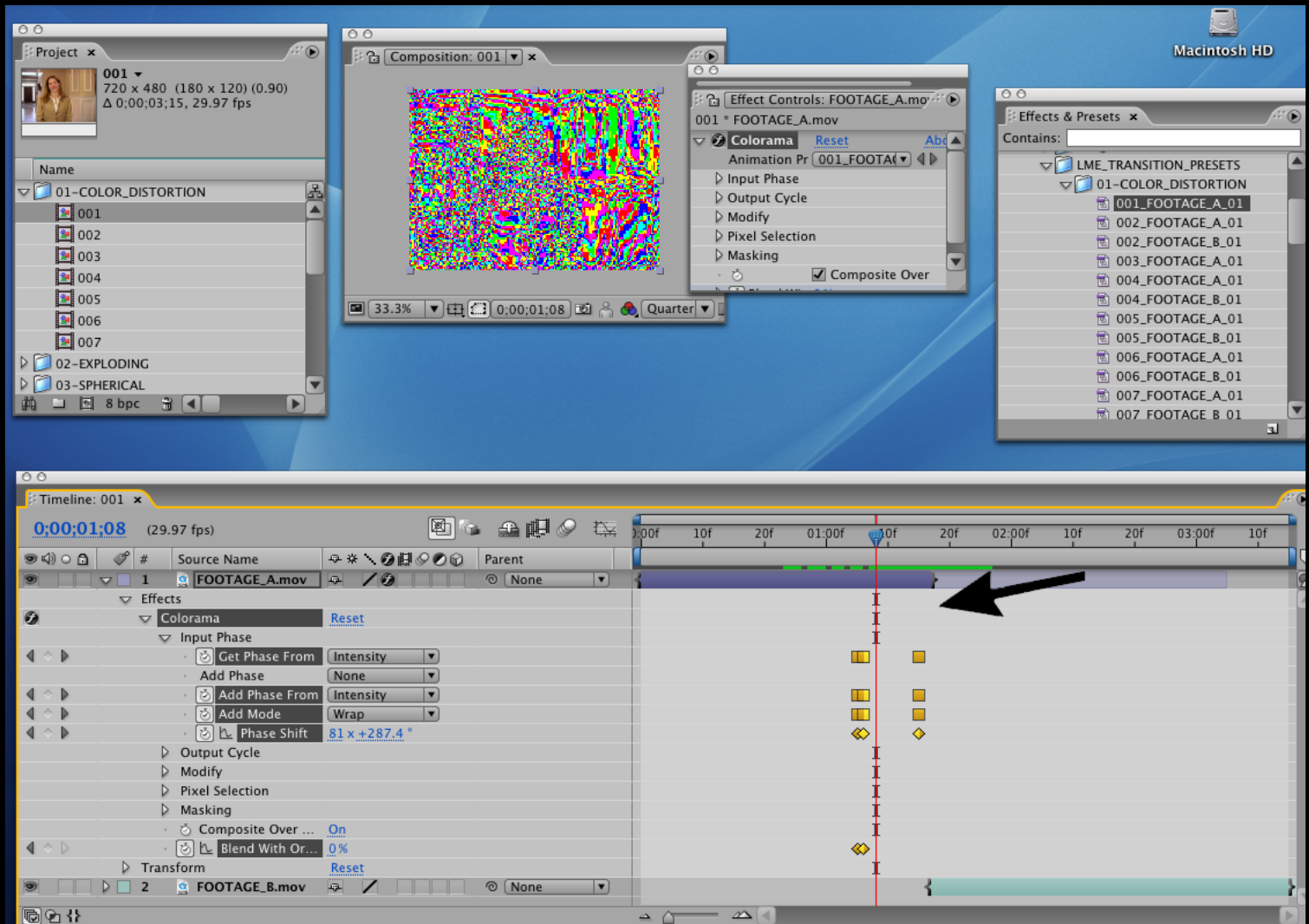
Open up the footage layer and the effects parameters. The keyframes will be revealed.



## ADJUSTING THE TRANSITION

7

After applying a Footage A preset select the keyframes and move them so the last keyframes in the timeline line up with the end of footage A.





## THE 2 PRESET TRANSITION

8

If you are applying a Footage B preset to Footage B move the keyframes so the first ones in the timeline line up with the beginning of Footage B.

Easily customize the transition by adjusting the keyframes or adding new ones to different parameters.

